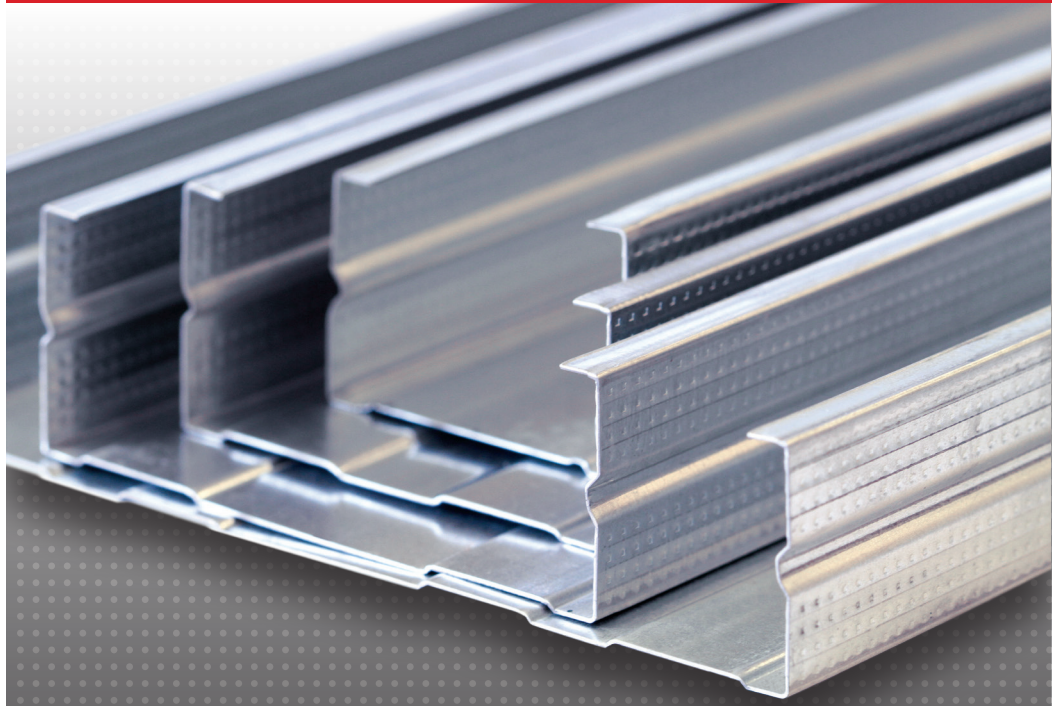


HADLEY

INTERNAL FRAMING PROFILES



**Ceiling Furring Sections
Dry-Wall Partitioning Sections
Angle Beads And Accessories**

About the

Hadley Group

Hadley Industries is one of Europe's leading manufacturers of cold rollformed sections and allied products

Operating from purpose built premises in the heart of the industrial West Midlands in the United Kingdom, the Hadley group of companies are dedicated to the provision of matchless standards of service, quality, innovation and technical expertise.

The integration of advanced research and development with in-house tool manufacture and construction of its own roll forming machines has earned Hadley Industries plc its reputation as a major force in Cold Rollforming technology

Components designed and engineered by companies within the Hadley Group are manufactured for use in all types of industry from agriculture through construction to automotive.

Advanced computer aided design technology is used in the development and production of a wide range

of products setting high standards of performance and reliability.

The Hadley Group has been established in the Middle East for over 20 years, operating from a purpose built factory in Jebel Ali, Dubai. It produces a comprehensive range of cold rolled formed sections for the construction industry including dry walling and ceiling sections, electrical cable management systems, PVC-u window reinforcement and structural steel framing.

We operate a Quality Management System which complies with the requirements of ISO 9001:2008



FM 553257

Our Mission Statement

'We will exceed our customers expectations by working together profitably to improve quality and service through investment in people and technology'.

Shaping the future in metal.

Material Specification:

Pre-hot dipped galvanised to EN10143: 2006

European standard EN 10142:1990 Bending
EN10346: 2009 Bending Profiling Quality (Z2). Z2 to
customer specifications

ASTMA653/A653M-11

Dry Wall Partitioning

Performance Standards:

Dry wall partitioning conforms to the following
performance standards:

BS 5234: 1992 Part 1 & 2 - Internal Non
Load Bearing partitioning.

EN10162:2003 - Cold Rolled Steel Sections.

EN14195:2005 - Galvanised Steel Studs and Channels
for stud and sheet partitions and linings using screw
fixed plaster board.

This guide only provides details of the
metal profile manufactured by
Hadley Industries (Middle East) FZE

Ceiling Furring

Performance Standards:

Ceiling Furring system conforms to the following
performance standards:

EN10143: 2006 - Continuously hot-dipped Zinc coated
and alloy coated steel, wide strip, sheet, plate and
slit wide strip.

EN10162:2003 - Cold Rolled Steel Sections.

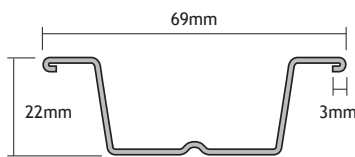
ASTMC754-11 - Installation of Steel Framing Members
to Receive Screw-Attached Gypsum Panel Products

Ceiling furring sections

Hadley Ceiling Furring Sections are suitable for most commercial, recreational and retail applications as well as residential developments. The sections offer a high performance support system for Gypsum board providing sound insulation and fire protection that can be used for new ceiling structures or to upgrade existing ceilings. Our ceiling furring sections are fully compatible with our stud and track partitioning sections.

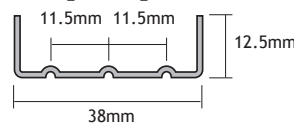
Product Range /Dimensions

Furring Channel



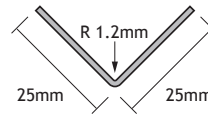
Product code:
4850PL

Main Channel



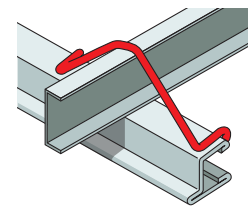
Product code:
2818PL

25mm x25mm 90° Angle



Product code:
3266PL

Preformed Spring Clip



Construction

The Ceiling Furring construction comprises of a metal framework fixed with a Furring Section clip attached to the Primary support channel.

It is then supported by to a 25mm x 25mm perimeter angle and the entire framework suspended from the structural soffit using various hanging methods, see Fig. 1-3.

1. Rigid Angle
2. Galvanised Wire
3. Adjustable Hangers

The suspended ceiling provides a robust ceiling capable of accepting a degree of loading. The variable ceiling cavity can be used to route ducting and other types of services.

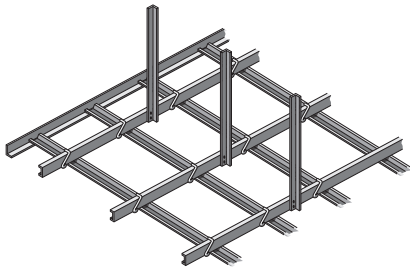
Perimeter Angle is fixed to the walls around the edge of a room providing support for the Ceiling Furring Channel. Primary Channel is suspended at a maximum of 1200mm centres using either one of the methods shown.

Fix the Furring Channels at right angles to the primary Channel at 450mm or 600mm centres using pre-formed clips.



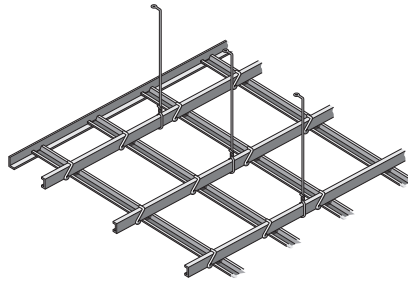
Ceiling Furring Sections

Support Methods



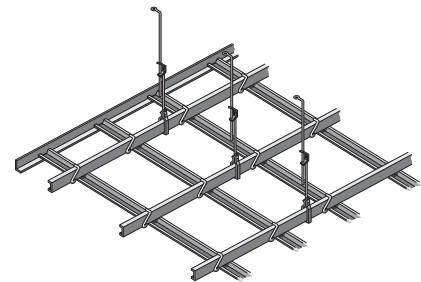
1. Rigid Angle

This method of fixing utilises 25x25mm angle. Fixed to the main channel using 2 self tapping screws and connected to the ceiling area by the use of brackets screwed to the angle.



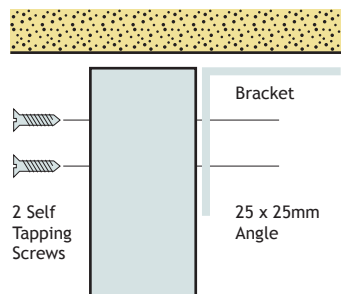
2. Galvanised Wire

This method of fixing requires the wire to be fixed to the ceiling area by attaching the wire to hooks/bolts and then securing the wire to the main channel.

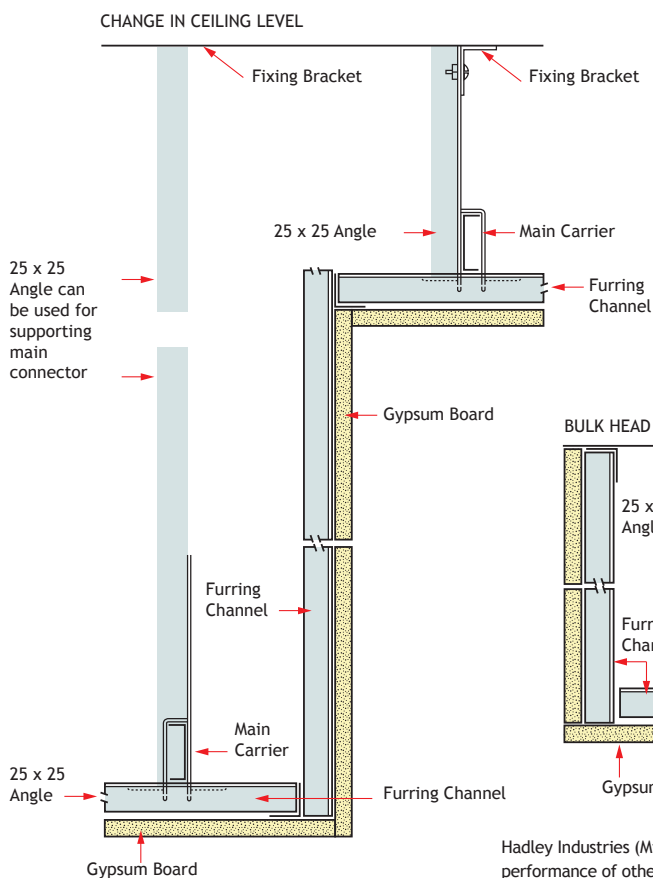
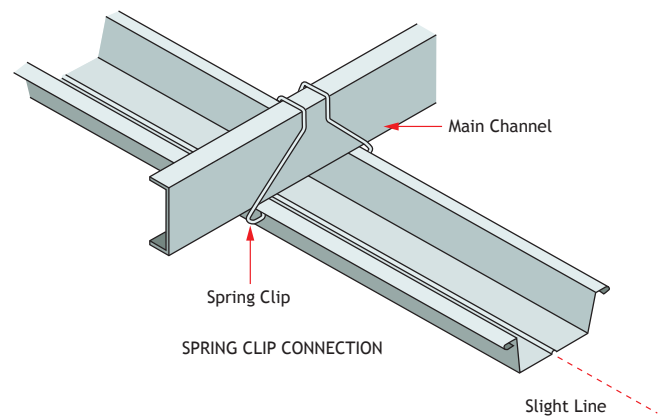


3. Adjustable Hangers

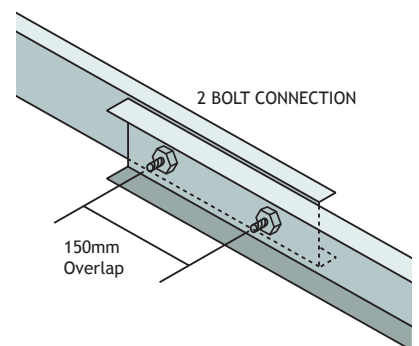
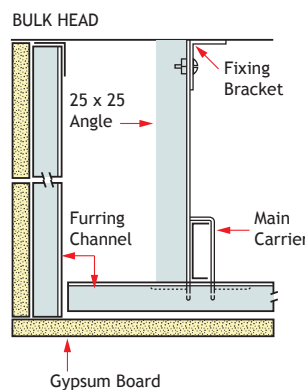
Adjustable Hangers may also be used as a method of fixing the Furring System, allowing adjustment where necessary to the framework.



The Site Line is prominent on our Furring Channel and enables the contractor to 'Line In' the Gypsum Board.



When connecting the main carrier the following method can be adopted.

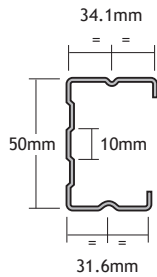


Hadley Industries (Middle East) FZE supply metal sections only, therefore we are unable to guarantee the performance of other components and / or materials employed in the construction of ceiling furring systems. *For details of how these sections perform with the plasterboard, please contact the board manufacturer.

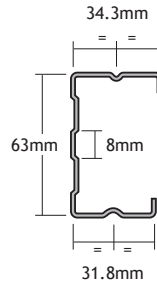
Dry-wall partitioning sections

Hadley stud and track partitions are lightweight, non-loadbearing and quickly assembled on site. They provide cost effective partitions suitable for all types of commercial, recreational and industrial buildings as well as residential developments. The section also allows for the inclusion of services during construction. Our stud and track partitioning is fully compatible with our ceiling furring sections.

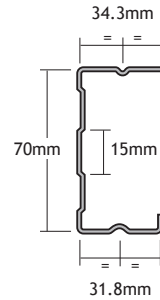
Product code: 2836PL



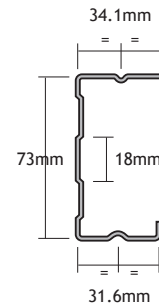
Product code: 3093PL



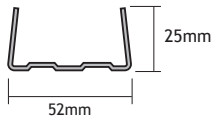
Product code: 3094PL



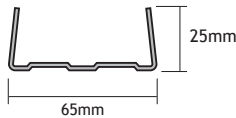
Product code: 2833PL



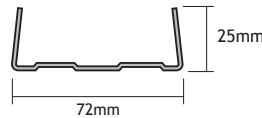
Product code: 2820PL



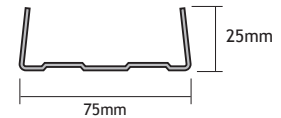
Product code: 3088PL



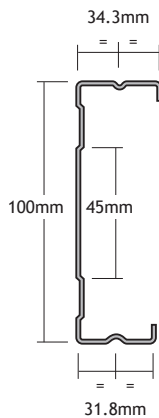
Product code: 3089PL



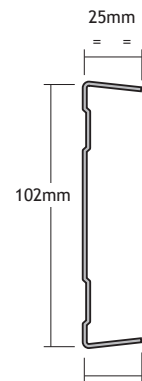
Product code: 2821PL



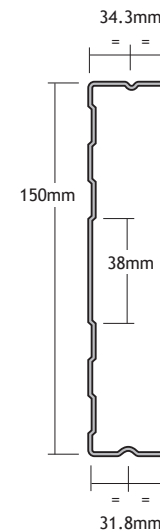
Product code: 3095PL



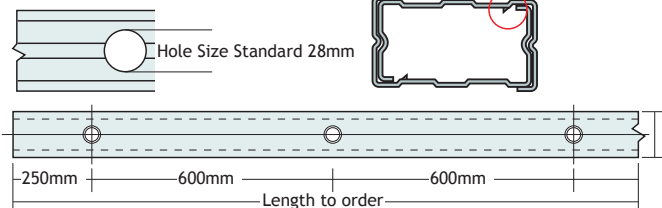
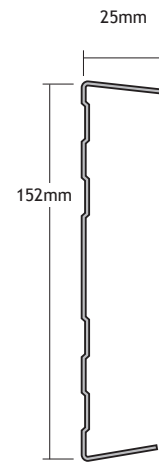
Product code: 3090PL



Product code: 3096PL

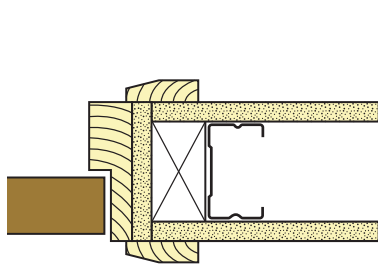


Product code: 3091PL

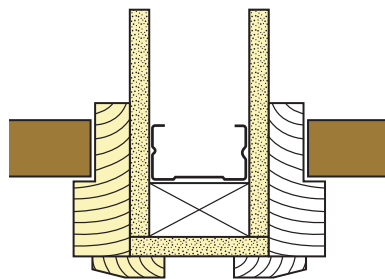


product	reference	area cm ²	zxx cm ²	zyy cm ³	ixx cm ⁴	iyy cm ⁴	rxx cm	ryy cm
50mm Stud	2836PL	0.51	0.85	0.32	2.14	0.71	2.06	1.18
63mm Stud	3093PL	0.56	1.15	0.34	3.63	0.77	2.55	1.17
70mm Stud	3094PL	0.59	1.31	0.34	4.63	0.8	2.81	1.17
73mm Stud	2833PL	0.60	1.38	0.34	5.08	0.8	2.92	1.16
100mm Stud	3095PL	0.71	2.11	0.36	10.62	0.9	3.88	1.13
150mm Stud	3096PL	0.91	3.71	0.37	27.98	1.01	5.56	1.06

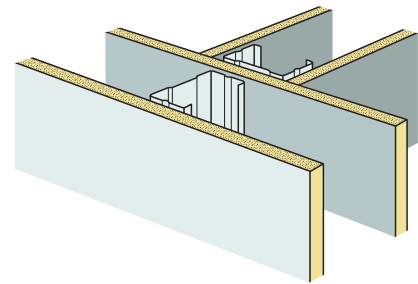
Internal Framing Profiles Guide



SINGLE DOOR APPLICATION



DOUBLE DOOR APPLICATION



JUNCTION DETAIL

Fixing ceiling and floor track

Floor/Ceiling track must be securely fixed with a row of fixings, at 600mm max centres.

If the concrete or screeded floor is new, consideration should be given to the installation of damp proof membrane between the floor surface and the track section.

Marble and ceramic tiles

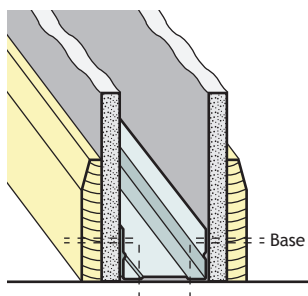
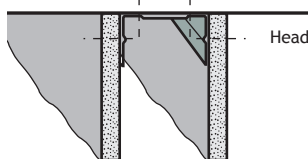
Marble/Ceramic tiles with a maximum weight of 32kg/m² may be applied using thin bed adhesive (usually 3mm thick), stud centres will normally require closing down.

A

Electrical Conduits and pipes can be easily accommodated up to a maximum diameter of 25mm with the wall cavity.

B

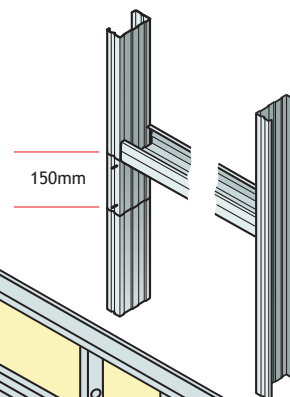
For heavy fixtures such as bathroom and sanitary fixings, additional support may be required



Door openings

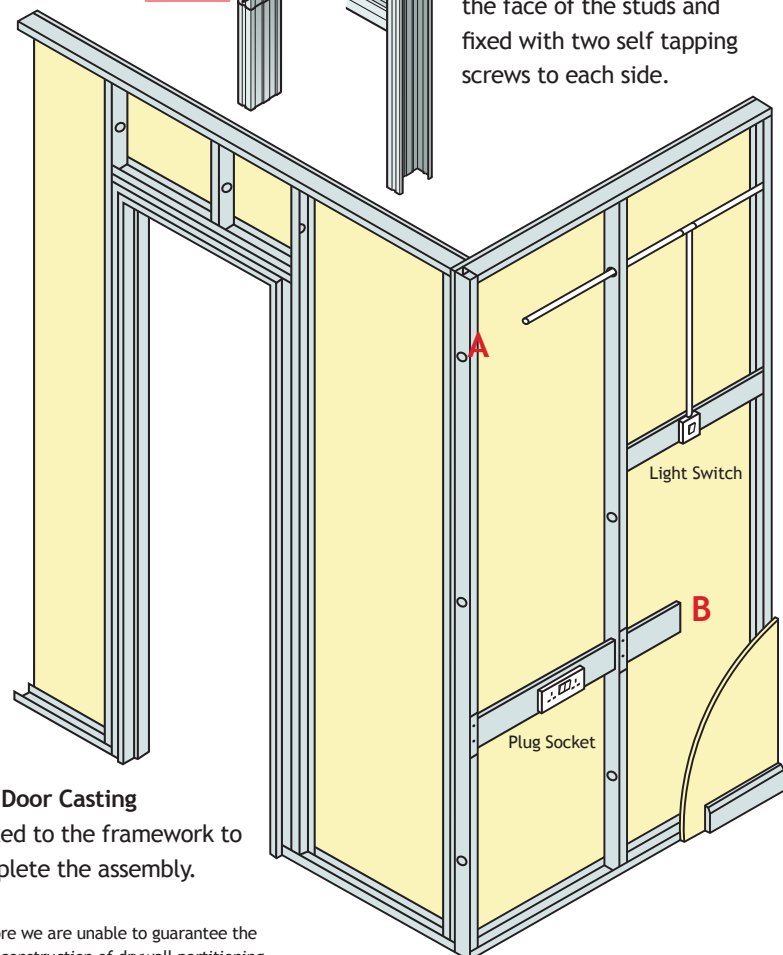
The designers should consider thickness tolerances of the partition types in relation to the proposed door frame detail. A standard door frame is formed by locating full height studs on each of the openings. The head is formed from a section of track fixed to studs on each side.

Where additional provision is required to support heavy doorsets, the studs can be sleeved with track section of appropriate gauge.



At the head:

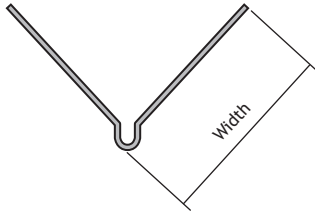
Channel is cut and bent to extend 150mm down the face of the studs and fixed with two self tapping screws to each side.



The Door Casting is fixed to the framework to complete the assembly.

Angle beads and accessories

Corner bead

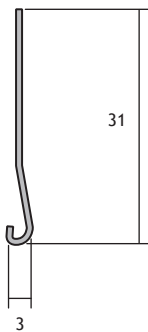


reference	width (mm)	length (mm)	material	box qty's
4048	25mm	3000	0.4mm Galv	50
4585	31mm	3000	0.4mm Galv	50

The Dry Wall Angle Bead is a general purpose interior corner plaster bead most commonly used over Gypsum plaster board. It provides a neat straight corner whilst protecting and reinforcing the plaster.

For Stainless Steel enquiries, email: hi@hadleygroup.ae

Stop bead

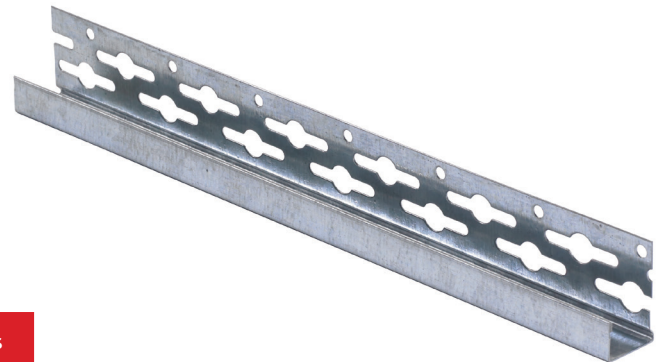
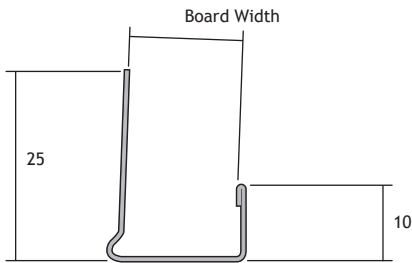


reference	plaster depth (mm)	length (mm)	material	box qty's
4049	3mm	3000	0.4mm Galv	50
4585	31mm	3000	0.4mm Galv	50

The Dry Wall Stop Bead is designed for thin / single coat plaster and it is used for the finishing, reinforcing and protection of interior plaster edges. For Stainless Steel enquiries, email: hi@hadleygroup.ae

Angle beads and accessories

Board trim

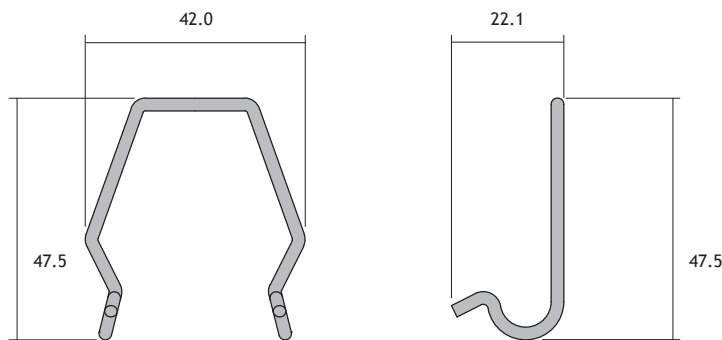


reference	board width (mm)	length (mm)	material	box qty's
4050	9.5mm	3000	0.4mm Galv	50
4051	12.5mm	3000	0.4mm Galv	50
4052	15mm	3000	0.4mm Galv	50

The Dry Wall Board Trim is designed for a protective single and protective coat plasterwork and used to protect and reinforce plaster edges.

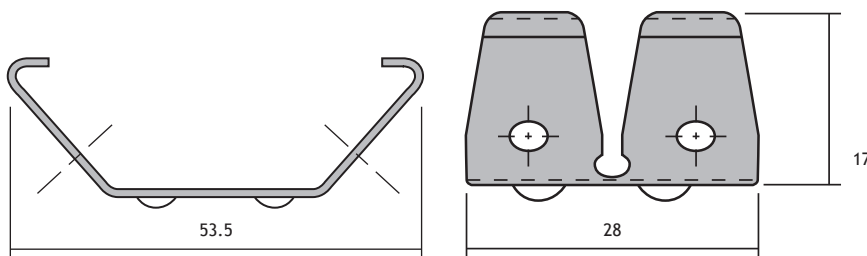
For Stainless Steel enquiries, email: hi@hadleygroup.ae

Wire connection clip for 38mm channel



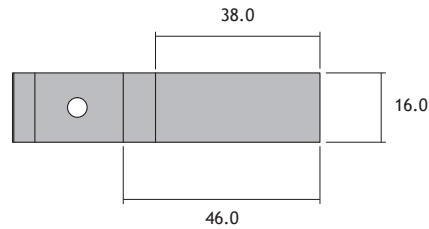
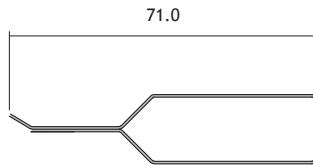
part number	weight per 100	material	box qty's
20206-A	4 KG	Galvanised Steel Wire to EN 10218-2	500

3mm double spring clip for use in adjustable hanging systems



part number	weight per box	material	box qty's	finish
HDCV/3/B	5 KG	0.5mm Spring Steel	500	Black Phosphate to EN 12476
HDCV/3/S	5 KG	0.5mm Spring Steel	500	Galvanised Silver

3mm channel bracket



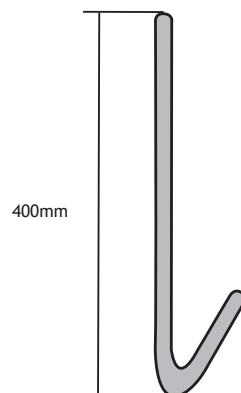
Part Number	Size (mm):	Weight per 100	material	box qty's
2973	12 x 38	5 KG	Galvanised Mild Steel	250

ML75 - Adjustable bracket

Section Properties NOTE: GL2 For fixing stud to masonry - maximum stand off 75mm

reference	description	length (mm)	material	box qty's
ML-75	Adjustable Bracket	195mm	Galvanised Steel	100

Hangers



reference	length (mm)	material	box qty's
H-ROD/400	400	3mm Galv Steel Wire	100
H-ROD/500	500	3mm Galv Steel Wire	100
H-ROD/750	750	3mm Galv Steel Wire	100
H-ROD/1000	1000	3mm Galv Steel Wire	100



P.O. Box 61322, Dubai, United Arab Emirates.

Telephone: +971-4-883 3811

Fax: +971-4-883 3973

E-mail: hi@hadleygroup.ae

www.hadleygroup.com

**If you need help or advice give us a call.
We've a wealth of experience and are here to help!**

**The details in this brochure are based upon trade experience, however contractors
may adopt their own methods of construction.**

While every precaution has been taken to ensure accurate presentation of information, The Hadley Group cannot be held responsible for any errors or omissions. We also reserve the right to change specification without prior notice.